

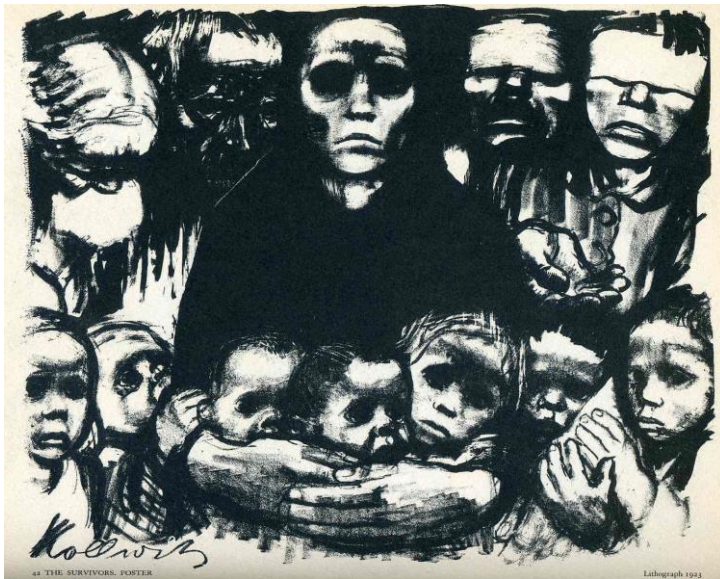
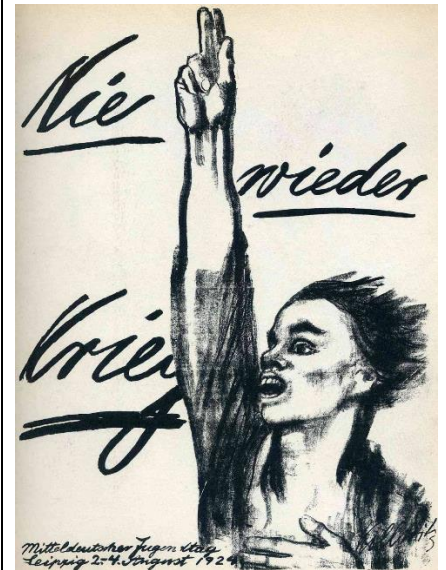


Key Vocabulary		Definition	Artist Focus: Kathe Kollwitz
1	Monochrome	a photograph or picture developed or executed in black and white or in varying tones of only one colour.	 <p>Self-portrait – 1922-23</p>  <p>The Parents – 1921 - 22</p>
2	Chiaroscuro	The treatment of light and shade in a drawing or painting.	
3	Linocut print	A relief process in printmaking, in which an artist cuts away negative spaces from a block of linoleum, leaving raised areas to take ink for printing.	
4	Woodcut print	A wooden block is carved so that those parts not intended to print are cut away, leaving the design raised.	
5	Composition	Any process in which any area of the plate not to be printed is carved away, leaving original surface to be printed.	
6	Symbolism	the use of symbols to represent ideas or qualities	
7	Commission	the act of requesting the creation of a piece, often on behalf of another. Artwork may be commissioned by private individuals, by the government, or businesses.	
8	Printing Press	A mechanical device for transferring text or graphics from a woodblock or type to paper using ink.	
9	Composition	the arrangement of elements within a work of art.	
10	The Elements of Art	Tone, Line, Texture, Shape, Form, Colour and Space	



The Survivors – 1923



Never Again War - 1924

Kathe Kollwitz was born in Russia in 1867 and died in 1945.

She studied art in Berlin and went onto to produce a large amount of drawings, prints, painting and sculpture.

In 1881 she married Dr Karl Kollwitz and they had a son, Peter, in 1896.

In 1914 her son was killed in Flanders. Kathe believed that art should reflect the social conditions of the time. She produced a series of works reflecting her concerns with the themes of war, poverty, working class lives and the lives of ordinary women.