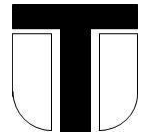




# Theale Primary School



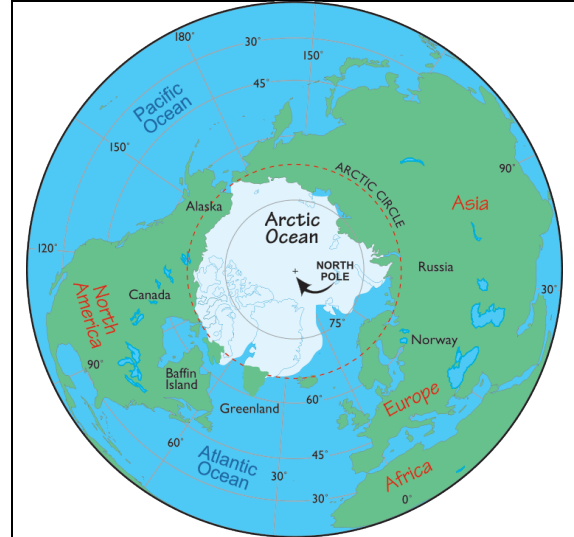
Geography: Summer Term

Year: FS2/Y1

Topic: A study of The Arctic

## Key Vocabulary

Arctic	A polar region located at the northernmost part of Earth.
Climate	The usual temperature, wind and rainfall in an area of the Earth's surface for a long time.
Tundra Climate	A cold region of treeless level ground found in the Arctic.
North Pole	The point in the Northern Hemisphere where the Earth's axis of rotation meets its surface.
Glacier	A slowly moving mass of ice formed by the accumulation and compaction of snow.
Sea Ice	Sea Ice occurs when salt water freezes. It floats on the ocean surface.
Inuit	Indigenous people inhabiting the Arctic.
Adaptation	To change and become more suited to an environment.



## Countries in the Arctic

Canada	Sweden
Denmark	Norway
Finland	Russia
Iceland	United States

## Arctic Animals



Polar Bear



Beluga Whale



Arctic Hare

## Key facts about The Arctic

Because of the Earth's tilt, for at least one day a year there's an entire day of darkness in this freezing region — and also a full day of sunshine.

Temperatures as low as  $-70^{\circ}\text{C}$  have been recorded in northern Greenland.

Despite the freezing-cold temperatures, approximately four million people call this wintery wonderland home!

The ice of the Arctic contains around ten percent of the world's fresh water.

The enormous ice sheet of the Arctic rests on water and not land.