

History Knowledge Organiser: Year 4/5- Ancient Greece 800BC-323BC

Key Knowledge:

Ancient Greece is historically important because it has had such an influence on modern European culture, including sculpture, architecture, philosophy, arts, politics, science and maths.

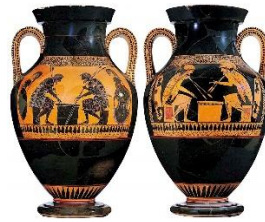
Ancient Greece was not one country, but made up of city states. City states went to war against each other but would also join together against common enemies.

Around 508 BC, democracy was introduced in ancient Athens. Athenian men would debate important issues and then vote to decide what would happen.

The first recorded Olympic Games was in 776 BC, in Olympia. The event was held to honour the Greek god Zeus. Events included boxing, wrestling, running and chariot racing. Women were not allowed to compete.

The ancient Greeks believed in many gods and goddesses. Each one was responsible for certain parts of life. Festivals were held to celebrate the gods and goddesses. Ancient Greeks believed that the 12 most powerful gods lived on Mount Olympus. Zeus was the most powerful of all the gods. He was god of the sky and the king of Mount Olympus.

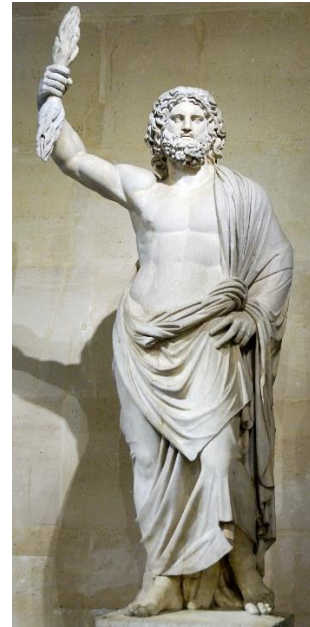
Sources and Artefacts:



Black figure pottery showing two warriors (Ajax and Achilles) playing a game



Replica of a discus used in the Olympic Games



Marble statue of Zeus (ruler of the Ancient Greek gods)

Key Vocabulary

Archaeologist - someone who studies the past by digging up artefacts and studying them.

City-state: a small, independent city. The city's government of which exercises full control over itself and all territories within its borders.

Democracy: a system of government by the whole population or all the eligible members of a state.

Empire: a group of lands all ruled by one country or civilization.

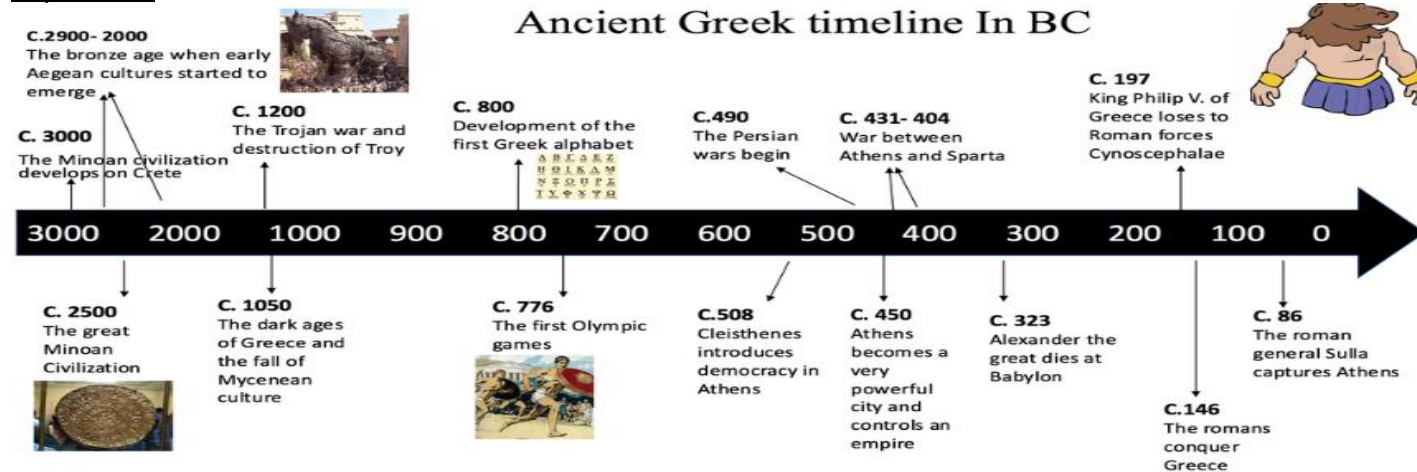
Olympics: a series of athletic contests held in Olympia.

Oracle: a priest or priestess seen as a messenger for the gods. People would ask for advice or prophecies from the Oracle.

Parthenon: A former temple on the Acropolis in Athens. Dedicated to the goddess Athena (patron of the city of Athens).

Temple: a building devoted to the worship of a god or gods.

Key Dates:



Key Places:



